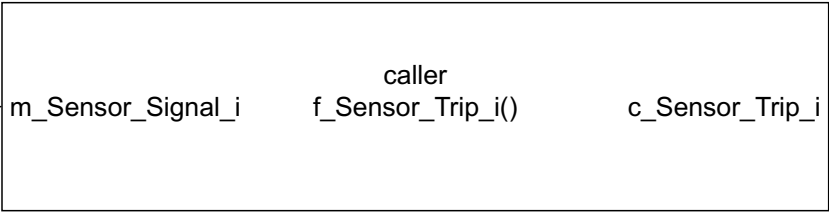


f_Sensor_Trip_i

m_Sensor_Signal_1:Valu



40
m_Sensor_Signal_1



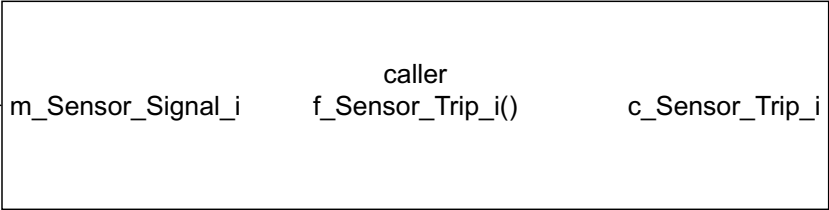
f_Sensor_Trip_1

1
c_Sensor_Trip_1

m_Sensor_Signal_2:Valu



75
m_Sensor_Signal_2



f_Sensor_Trip_2

0
c_Sensor_Trip_2